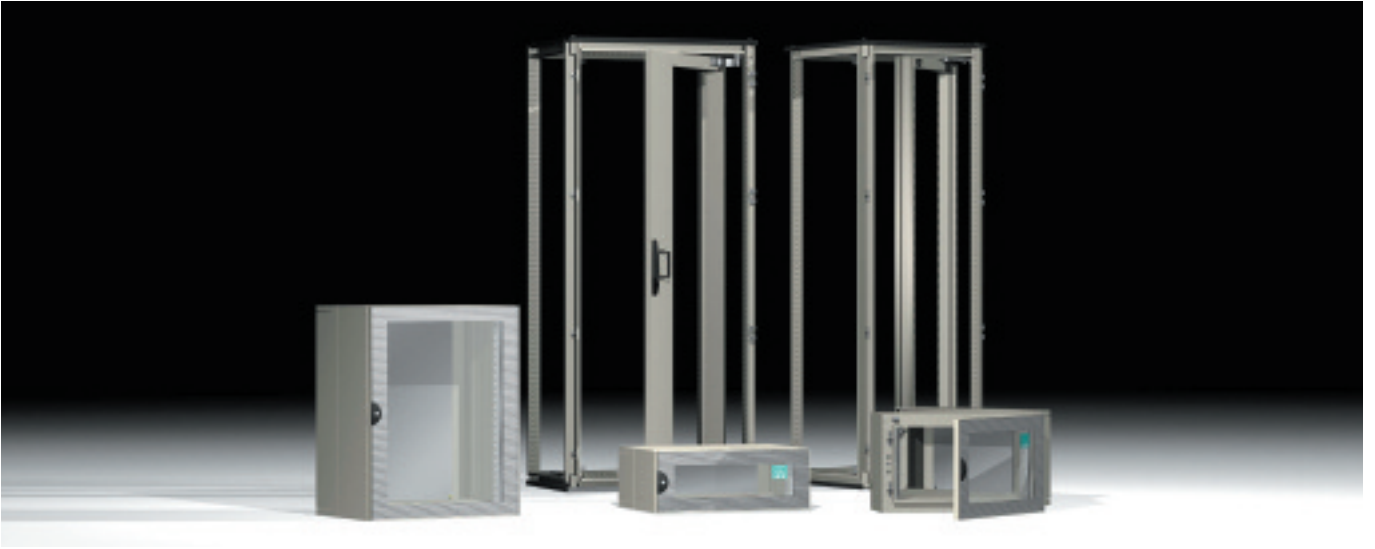


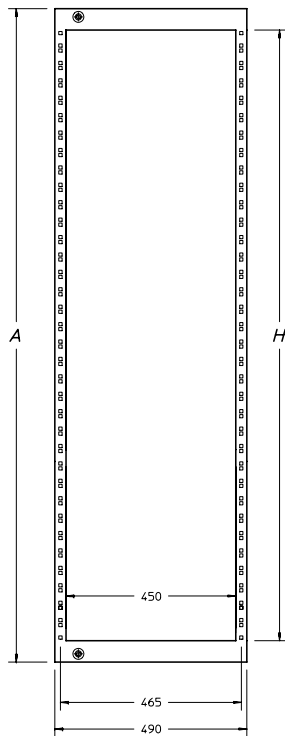


# RACK 19"





# 19" swinging frames



ONLY ROTATION 90°

## 600 SWINGING FRAME ATTR

### characteristics

Frame manufactured from pressbent rails in 1.5mm sheet steel and 2mm box-shaped horizontal profiles that give high strength.

### paint finish

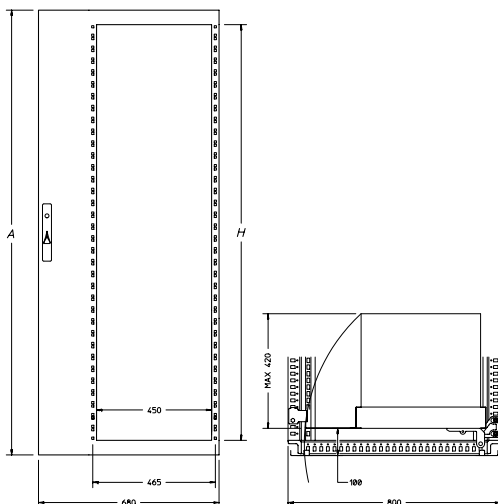
CE-TEK standard epoxy polyester powder coating.  
Colour: RAL 7032 textured finish.

### supply includes

- rack frame
- two 3mm double bar locking system
- 90° rotating hinges complete with accessories
- closing latches.

## 600 rack frame

code		cabinet height	A	H	n° HE
mod.	art.				
ATTR	035060	1800	1668	1559	35
	040060	2000	1868	1782	40
	044060	2200	2068	1959	44



ONLY ROTATION 180°

## 800 SWINGING FRAME ATTR

### characteristics

Frame and box-shaped horizontal profiles manufactured from 2mm sheet steel which offer high strength.

### paint finish

CE-TEK standard epoxy polyester powder coating. Frame and panel colour: RAL 7032 textured finish.

### supply includes

- rack frame
- 180° rotating hinges complete with accessories
- closing latches.

## 800 rack frame

code		cabinet height	A	H	n° HE
mod.	art.				
ATTR	035080	1800	1668	1559	35
	040080	2000	1868	1782	40
	044080	2200	2068	1959	44



# 19" swinging frames

## CENTRAL SWINGING FRAME ATTR characteristics

Frame manufactured from two pressent lateral panels manufactured from 1.5mm sheet steel and from 2mm box-shaped horizontal rails which grant high strength.

### paint finish

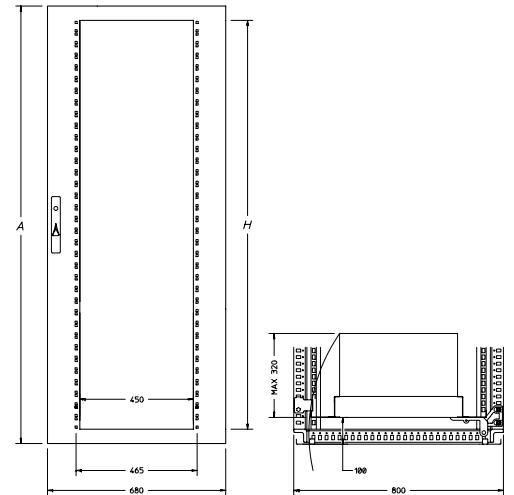
CE-TEK standard epoxy polyester powder coating. Frame and panel colour: RAL 7032 textured finish.

### supply includes

- rack frame with locking system
- 180° rotating hinges complete with accessories
- closing latches.

## 800 central rack frame

code		cabinet height	A	H	n° HE
mod.	art.				
ATTR	035080C	1800	1668	1559	35
	040080C	2000	1868	1778	40
	044080C	2200	2068	1959	44



ONLY ROTATION 180°

## PARTIAL HEIGHT 19" SWING FRAME characteristics

Frame manufactured from 1.5mm sheet steel with horizontal stiffening frames.

### paint finish

CE-TEK standard epoxy polyester powder coating. RAL 7032 textured finish.

### composition

- 19" swing frame complete with  $\varnothing$  3mm double bar locking system
- closing brackets
- 180° hinges with fixing accessories.

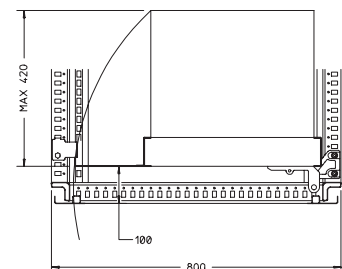
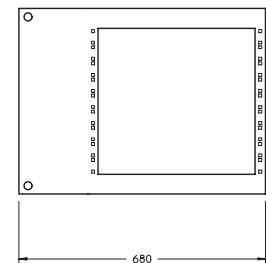
## 800 partial swing frame

n° HE	code	
	mod.	art.
9	ATTR	009080
12	ATTR	012080
15	ATTR	015080

To be ordered separately the fixing rails.

## fixing rails of partial swing frame

depth	code	
	mod.	art.
500	WTTR	000500
600	WTTR	000600
800	WTTR	000800
1000	WTTR	001000



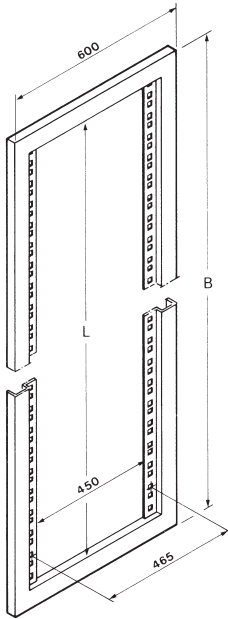
ONLY ROTATION 180°

### composition

Single piece complete with mounting accessories.



# 19" fixed frame



## FIXED FRAME ATCR

Manufactured from 2mm sheet steel.  
To be used to mount rack equipment.

### paint finish

CE-TEK standard epoxy polyester powder coating.  
Colour: RAL 7032 textured finish.

### supply includes

One piece, mounting accessories.

code		cabinet height	L	n° HE
mod.	art.			
ATCR	028060	1400	1252	28
	032060	1600	1429	32
	037060	1800	1652	37
	041060	2000	1829	41
	046060	2200	2052	46



# 19" rails

## "L" RAILS ATRL

Manufactured from 2mm pressbent sheet steel.

paint finish

CE-TEK standard epoxy polyester powder coating.

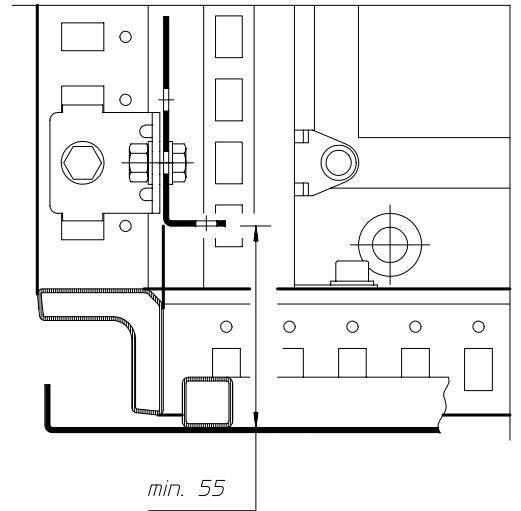
Colour: RAL 7032 textured finish.

composition

2 rails complete with mounting screws.

## "L" rack rails

code		cabinet height	n° HE
mod.	art.		
ATRL	033060	1600	33
	038060	1800	38
	042060	2000	42
	047060	2200	47



## "U" RAILS ATRU

Manufactured from 2mm pressbent sheet steel.

paint finish

CE-TEK standard epoxy polyester powder coating.

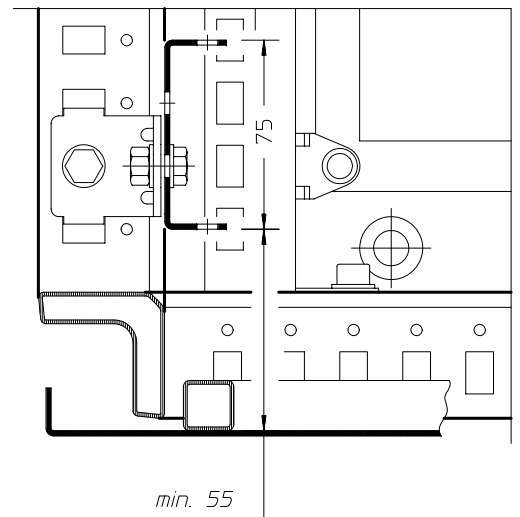
Colour: RAL 7032 textured finish.

composition

2 rails complete with mounting screws.

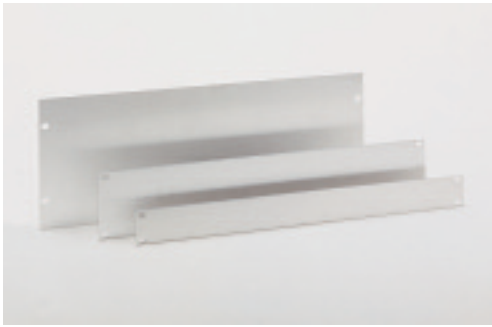
## "U" rack rails

code		cabinet height	n° HE
mod.	art.		
ATRU	033060	1600	33
	038060	1800	38
	042060	2000	42
	047060	2200	47





# accessories



## 19" PANELS

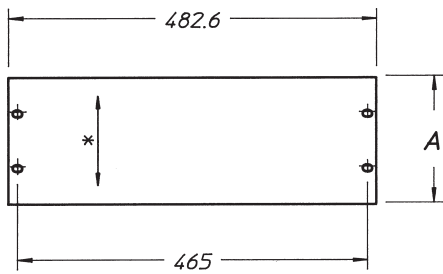
Manufactured from 3 mm satinised aluminium.  
RAL 7032 textured finish on request.

\* Satinised.

### composition

Single piece.

To be ordered separately: WT-106 and WA-107



mod.	code		units	A
	aluminium	painted		
WA	115	115L	1	43,6
	116	116L	2	88
	117	117L	3	132,5
	118	118L	4	177
	119	119L	5	221,5
	120	120L	6	266
	121	121L	7	310,5
	122	122L	8	355
	123	123L	9	399
	124	124L	10	443,5
	125	125L	11	488
	126	126L	12	532,5

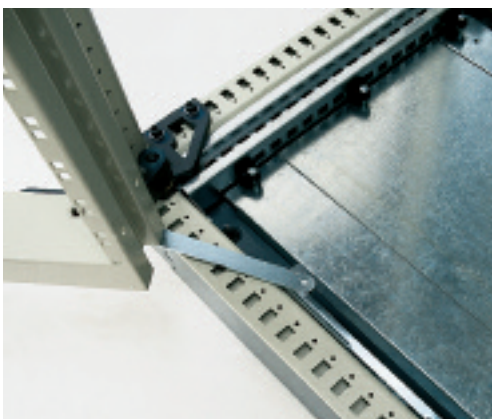
## M6 CAGE NUT WT-106

To be ordered separately.



## M6 SCREW WITH RING WA-107

To be ordered separately.



## FRAME STOP WTFR-001

Easy to mount, it stops the rack frame at 150°  
avoiding its accidental closing.

### supply includes

One piece, mounting accessories.



# accessories

## SUPPORT BRACKETS WA-990

Manufactured from 2mm sheet steel.

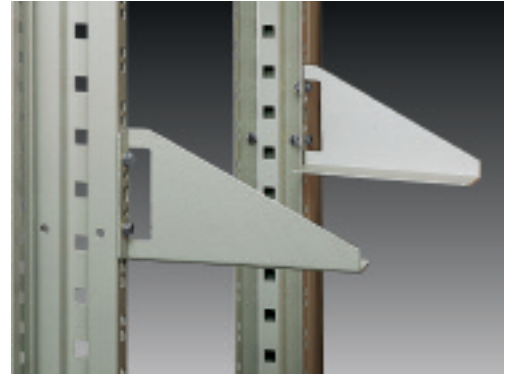
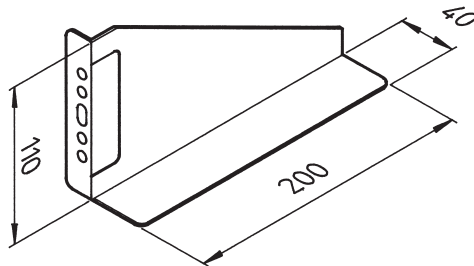
paint finish

CE-TEK standard epoxy polyester powder coating.

Colour: 7032 textured finish.

supply includes

Two pieces, mounting accessories.



## TOP AND BOTTOM COVERS WTCR-000800

Manufactured from 1.5mm sheet steel.

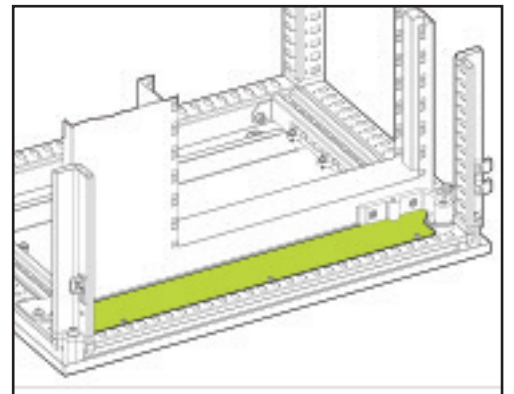
paint finish

CE-TEK standard epoxy polyester powder coating.

Colour: 7032 textured finish.

supply includes

Two pieces, mounting accessories.



## “SYSTEM PLUS” 19” RAILS - WTMK

Universal solution with front and side punchings.

characteristics

Manufactured from 1.5mm pressbent sheet steel.

paint finish

CE-TEK standard epoxy polyester powder coating.

Colour: 7032 textured finish.

composition

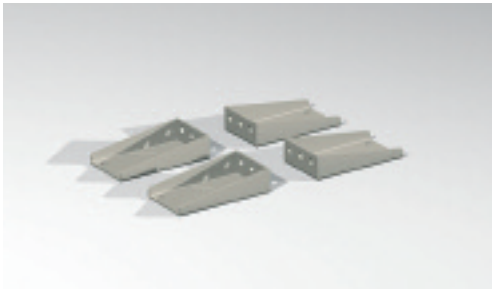
2 pieces complete with mounting accessories.



code		units	cabinet height
mod.	art.		
WTMK	331600	33	1600
	381800	38	1800
	422000	42	2000
	472200	47	2200



# accessories



## FIXING BRACKETS WTKK-000800

Special kit for fixation of WTMK 19" rails on cabinets 800mm wide.

### characteristics

Manufactured from 3mm pressbent sheet steel.

### paint finish

CE-TEK standard epoxy polyester powder coating.

Colour: 7032 textured finish.

### composition

4 pieces complete with mounting accessories.



## FIXED OR SLIDING SHELF FOR 19" APPLICATIONS WTRI

Shelf with ventilation openings.

Fixed shelf: load carrying capacity 70 Kg. Sliding shelf: load carrying capacity 40 Kg.

### paint finish

CE-TEK standard epoxy polyester powder coating. Colour: 7032 textured finish.

### composition

Single piece.

To be ordered separately: sliding guides or, if the shelf is fixed, order kit ELRP-001 (package of accessories for fixed installation).

code		shelf depth	cabinet depth
mod.	art.		
WTRI	000365	365	500
	000465	465	600
	000565	565	800
	000665	665	800
	000765	765	1000



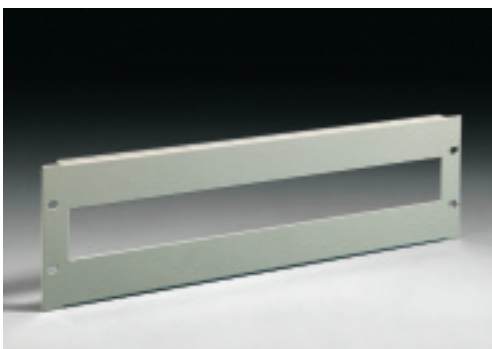
## SLIDING GUIDES FOR SHELF - WTGE

Guides for fixation of the shelf. Load carrying capacity 40 kg.

### composition

2 with mounting accessories.

code		shelf depth	cabinet depth
mod.	art.		
WTGE	000365	365	500
	000465	465	600
	000565	565	800
	000665	665	800
	000765	765	1000



## 19" FRONT PANEL WITH OPENING WTPF-030024

Front panel 3 units with modular slot that allows to lodge 24 modules 18mm.

### characteristics

Manufactured from 1mm pressbent sheet steel.

### paint finish

CE-TEK standard epoxy polyester powder coating. Colour: 7032 textured finish.

### composition

Single piece with mounting screws.





# CR 19" boxes

The boxes cover a range from 3 to 21µ and are available in 2 depths with a larger cable entry. The locking system operating from the front of the box, guarantees the sealing of the enclosure. The excellent appearance is achieved by external satin plexiglas.

### characteristics

Three sections box manufactured from 1.5mm sheet steel, with locking system ø 3 mm double bar key.

### paint finish

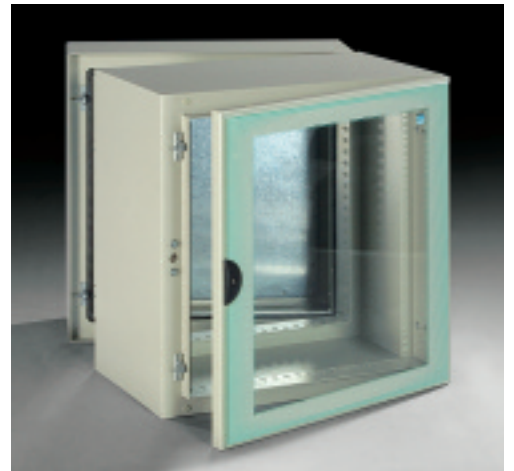
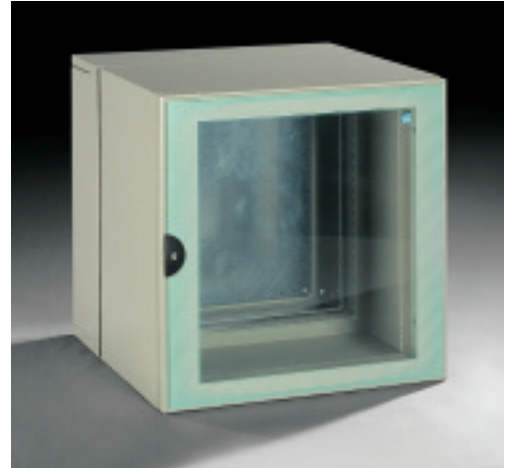
CE-TEK standard cycle thermosetting epoxy polyester powder coating. Colour: RAL 7032.

### conformity and approval



### protection degree

- IP 55
- type 1 complying with UL508A; UL50.



code		units	A	H	P
mod.	art.				
CR03	45	3	226	150	230
	55				330
CR06	45	6	359	283	230
	55				330
CR09	45	9	492	416	230
	55				330
CR12	45	12	626	550	230
	55				330
CR15	45	15	759	683	230
	55				330
CR18	45	18	892	816	230
	55				330
CR21	45	21	1026	950	230
	55				330

Supply includes mounting plate manufactured from 2.5mm sendzimir sheet steel.

