

**SEALED UP TO IP 67.  
WIDE RANGE OF SIZES.  
FULL CUSTOMISING  
SERVICE AVAILABLE.  
SPECIAL COLOURS.  
RFI SHIELDING.  
ATEX EEx'e' CERTIFIED.  
WIDE RANGE OF GLANDS  
AND TERMINALS.**

**THE CE-TEK RANGE OF GLASS REINFORCED POLYESTER ENCLOSURES HAVE BEEN DESIGNED TO MEET THE HIGHEST STANDARDS OF PROTECTION DEMANDED BY ELECTRICAL AND ELECTRONICS DESIGNERS AND SPECIFIERS SERVING BOTH INDUSTRIAL AND AEROSPACE MARKETS. THEY ARE MOULDED IN GLASS REINFORCED POLYESTER AND OFFER HIGH IMPACT STRENGTH WITH LIGHT WEIGHT MAKING THEM THE IDEAL CHOICE FOR HOUSING ELECTRICAL AND ELECTRONIC EQUIPMENT OF HIGH VALUE. THEIR 'SHOE BOX' DESIGN MAKES THEM AESTHETICALLY SUITABLE FOR A WIDE RANGE OF APPLICATIONS INCLUDING MOUNTING KEYPADS AND ELECTRONIC DISPLAYS. A FULL MACHINING AND CUSTOMISING SERVICE IS AVAILABLE TO PROVIDE YOU WITH A FINISHED PRODUCT AVOIDING THE PROBLEMS OF EMPLOYING SEVERAL SUB-CONTRACTORS ALONG WITH ALL THE HIDDEN GOODS INWARDS INSPECTION COSTS.**

## **TECHNICAL SPECIFICATION**

### **CONSTRUCTION:**

ALL ENCLOSURE BODIES AND LIDS ARE MANUFACTURED FROM GLASS REINFORCED POLYESTER WHICH IS HIGHLY RESISTANT TO CORROSION, PETROCHEMICAL PRODUCTS AND FATS, COMBINED WITH HIGH STRENGTH AND LIGHT WEIGHT. LIDS ARE SECURED WITH STAINLESS STEEL FASTENERS WHICH LOCATE OUTSIDE THE SEALED AREA..

### **IP RATING:**

BECAUSE OF THEIR DESIGN USING A RAISED RIB ON THE BOX BODY AND A RECESSED CHANNEL IN THE LID HOUSING A CONTINUOUS NEOPRENE SEAL THE STANDARD OF IP 66 IS ACHIEVED AS STANDARD WITH IP 67 VERSIONS AVAILABLE AT A SLIGHT INCREASE IN COST.

### **TEMPERATURE RANGE:**

USING THE STANDARD NEOPRENE GASKET -40° C TO +80° C OR USING THE OPTIONAL SILICON GASKETS -50° C TO + 120° C. FIRE RESISTANT TYPES ARE AVAILABLE TO SPECIAL ORDER.

### **FINISHES:**

AVAILABLE AS STANDARD GREY COLOUR RAL 7001. OPTIONAL COLOURS TO CUSTOMER SPECIFICATION ARE AVAILABLE . RFI SHIELDING FOR EMC COMPLIANCE AND SCREEN PRINTING.

### **CUSTOMISING:**

A FULL RANGE OF SECONDARY OPERATIONS IS AVAILABLE AT VERY COMPETITIVE PRICES INCLUDING DRILLING AND TAPPING, MACHINING, ENGRAVING, FITTING OF CABLE GLANDS AND ACCESORIES, PLUGS AND SOCKETS, AND A FULL RANGE OF TERMINAL BLOCKS AND FITTINGS.

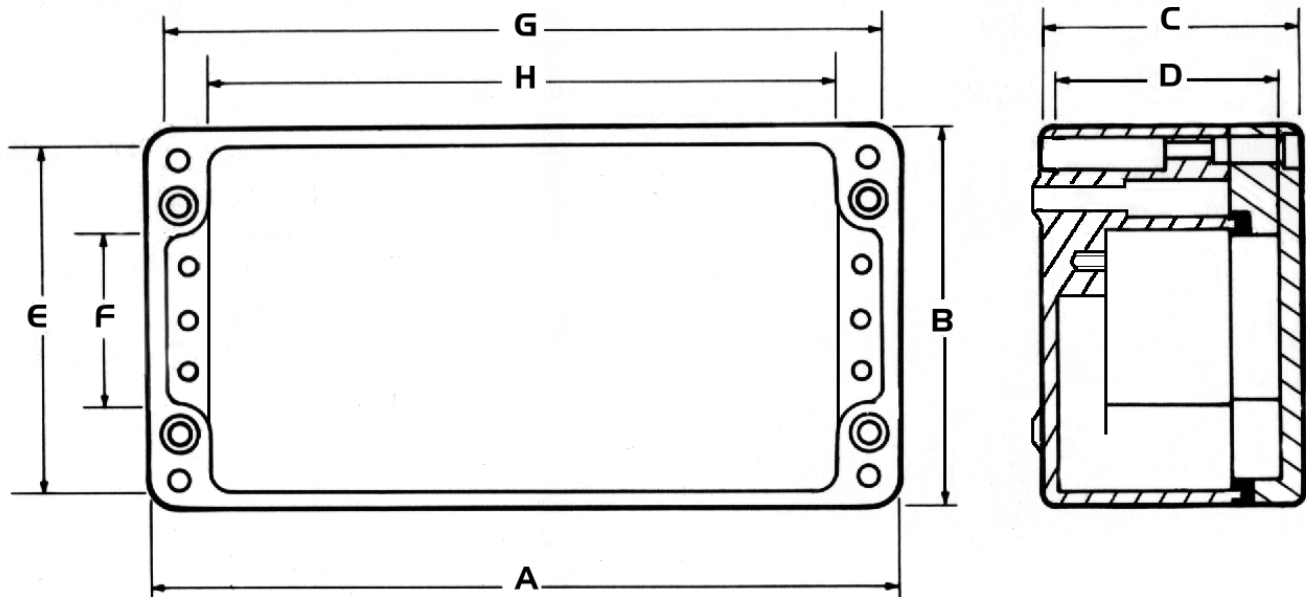
### **EEx'e' APPROVAL:**

ALL THE CEP RANGE IS AVAILABLE WITH FULL EEx'e' CERTIFICATION TO THE LATEST ATEX 100A STANDARD COMPLETE WITH A WIDE RANGE OF TERMINALS AND CABLE GLANDS

### **ACCESSORIES:**

INTERNAL HINGES, MOUNTING PLATES, EXTERNAL HINGES, EXTERNAL MOUNTING FEET AND WIRE LOCK SCREWS ARE ALL AVAILABLE AT EXTRA COST.

***PHONE OUR SALES ORDER LINE 01298 872233***



PART NOS	A	B	C	D	E	F	G	H
CEP 807555	80	75	55	46	66	27	71	56
CEP 117555	110	75	55	46	66	27	101	86
CEP 167555	160	75	55	46	66	27	151	136
CEP 197555	190	75	55	46	66	27	181	166
CEP 197575	190	75	75	66	66	27	181	166
CEP 237550*	230	75	55	41	66	27	221	206
CEP 121290	122	120	90	81.5	111	66	113	90
CEP 221290	220	120	90	81.5	111	66	211	188
CEP 161690	160	160	90	80	148	90	148	120
CEP 261690	260	160	90	80	148	90	248	220
CEP 361690	360	160	90	80	148	90	348	320
CEP 561690*	560	160	90	80	148	90	548	520
CEA 252512	255	250	120	110	238	180	243	215
CEP 252516	255	250	160	149	238	180	243	215
CEP 402512	400	250	120	110	238	180	388	360
CEP 402516	400	250	160	149	238	180	388	360
CEP 404012	400	405	120	110	393	335	388	360

NOTES: ENCLOSURES MARKED \* HAVE 6 LID FIXINGS. THE QUANTITY OF INTERNAL FIXING HOLES IS DEPENDENT ON THE SIZE OF THE ENCLOSURE SPECIFIED, PLEASE CONSULT OUR TECHNICAL SALES DEPARTMENT FOR FURTHER DETAILED INFORMATION