

CE-TEK ALUMINIUM ENCLOSURES



**SEALED UP TO IP 67.
WIDE RANGE OF SIZES.
FULL CUSTOMISING
SERVICE AVAILABLE.
SPECIAL COLOURS.
RFI SHIELDING.
ATEX EEx'e' CERTIFIED.
WIDE RANGE OF GLANDS
AND TERMINALS.**

THE CE-TEK RANGE OF DIE CAST ALUMINIUM ENCLOSURES HAVE BEEN DESIGNED TO MEET THE HIGHEST STANDARDS OF PROTECTION DEMANDED BY ELECTRICAL AND ELECTRONICS DESIGNERS AND SPECIFIERS SERVING BOTH INDUSTRIAL AND AEROSPACE MARKETS. THEY ARE DIE CAST IN AL Si 12 ALUMINIUM ALLOY AND OFFER HIGH IMPACT STRENGTH WITH LIGHT WEIGHT MAKING THEM THE IDEAL CHOICE FOR HOUSING ELECTRICAL AND ELECTRONIC EQUIPMENT OF HIGH VALUE. THEIR 'SHOE BOX' DESIGN MAKES THEM AESTHETICALLY SUITABLE FOR A WIDE RANGE OF APPLICATIONS INCLUDING MOUNTING KEYPADS AND ELECTRONIC DISPLAYS. A FULL MACHINING AND CUSTOMISING SERVICE IS AVAILABLE TO PROVIDE YOU WITH A FINISHED PRODUCT AVOIDING THE PROBLEMS OF EMPLOYING SEVERAL SUB-CONTRACTORS ALONG WITH ALL THE HIDDEN GOODS INWARDS INSPECTION COSTS.

TECHNICAL SPECIFICATION

CONSTRUCTION:

ALL ENCLOSURE BODIES AND LIDS ARE MANUFACTURED FROM DIE CAST ALUMINIUM ALLOY TYPE AL Si 12 WHICH IS HIGHLY CORROSION RESISTANT COMBINED WITH HIGH STRENGTH AND LIGHT WEIGHT. LIDS ARE SECURED WITH STAINLESS STEEL FASTENERS WHICH LOCATE OUTSIDE THE SEALED AREA..

IP RATING:

BECAUSE OF THEIR DESIGN USING A RAISED RIB ON THE BOX BODY AND A RECESSED CHANNEL IN THE LID HOUSING A CONTINUOUS NEOPRENE SEAL THE STANDARD OF IP 66 IS ACHIEVED AS STANDARD WITH IP 67 VERSIONS AVAILABLE AT A SLIGHT INCREASE IN COST.

TEMPERATURE RANGE:

USING THE STANDARD NEOPRENE GASKET -40° C TO +80° C OR USING THE OPTIONAL SILICON GASKETS -50° C TO + 120° C.

FINISHES:

AVAILABLE AS STANDARD EITHER UNPAINTED OR PAINTED GREY COLOUR RAL 7001. OPTIONAL FINISHES TO CUSTOMER SPECIFICATION ARE AVAILABLE INCLUDING HARD ANODISING, SEA WATER RESISTANT COATINGS, RFI SHIELDED FOR EMC COMPLIANCE AND SCREEN PRINTING.

CUSTOMISING:

A FULL RANGE OF SECONDARY OPERATIONS IS AVAILABLE AT VERY COMPETITIVE PRICES INCLUDING DRILLING AND TAPPING, MACHINING, ENGRAVING, FITTING OF CABLE GLANDS AND ACCESSORIES, PLUGS AND SOCKETS, AND A FULL RANGED OF TERMINAL BLOCKS AND FITTINGS.

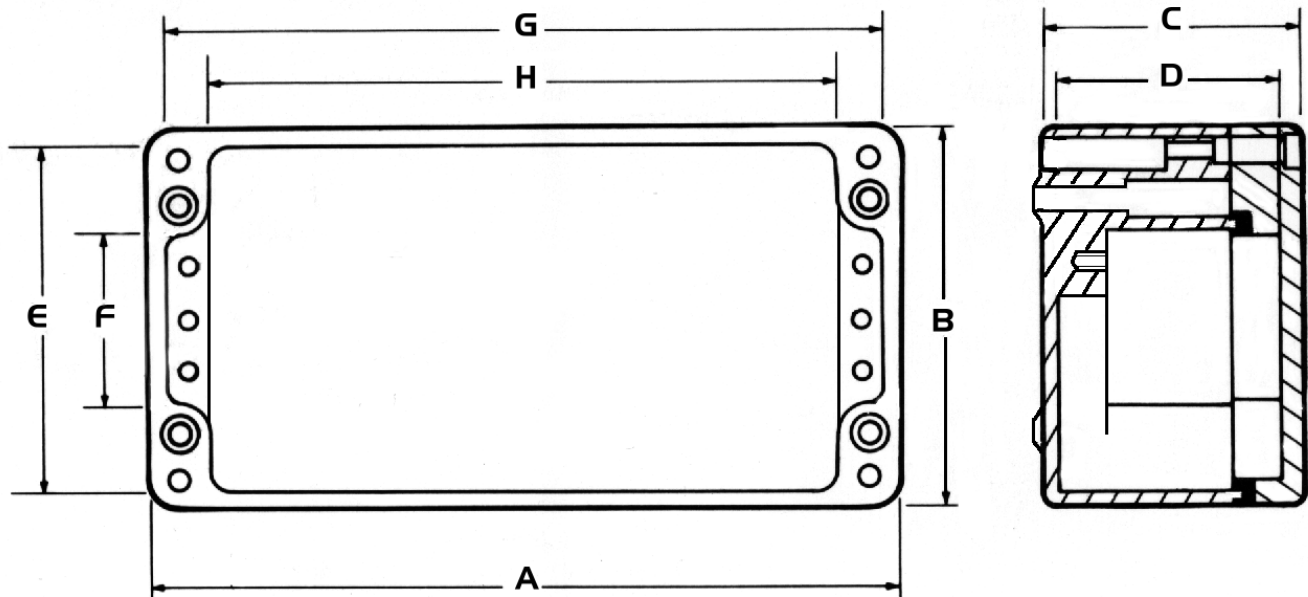
EEx'e' APPROVAL:

ALL THE CEA RANGE IS AVAILABLE WITH FULL ATEX 100A EEx'e' CERTIFICATION COMPLETE WITH A WIDE RANGE OF TERMINALS AND CABLE GLANDS

ACCESSORIES:

INTERNAL HINGES, MOUNTING PLATES, EXTERNAL HINGES, EXTERNAL MOUNTING FEET AND WIRE LOCK SCREWS ARE ALL AVAILABLE AT EXTRA COST.

PHONE OUR SALES ORDER LINE 01298 872233



PART NOS	A	B	C	D	E	F	G	H
CEA 504530	50	45	30	25	40	18.3	45	30.6
CEA 586436	58	64	36	29	56	32	50	34
CEA 986436	98	64	36	29	56	32	90	75
CEA 156436	150	64	36	27	56	32	142	126
CEA 186436	185	64	36	29	56	32	179	162
CEA 758057	75	80	57	49	72	49	66.5	51.5
CEA 128057	125	80	57	49	72	48	117	101
CEA 178057	175	80	57	49	72	48	167	152
CEA 258052	250	80	52	45	72	48	242	226
CEA 101080	100	100	80	74	92	54	92	71
CEA 161080	160	100	80	74	92	54	152	131
CEA 201080	200	100	80	74	92	54	192	171
CEA 231011	230	100	110	101	89.5	60	220	160
CEA 121280	122	120	80	72	111	66	113	90
CEA 121290	122	120	90	82	111	66	113	90
CEA 221280	220	120	80	72	111	66	211	188
CEA 221290	220	120	90	82	111	66	211	188
CEA 361280	360	120	80	72	111	66	351	323
CEA 141490	140	140	90	82	131	76	131	100
CEA 201490	200	140	90	82	131	76	191	160
CEA 161690	160	160	90	82	151	90	151	120
CEA 261690	260	160	90	82	151	90	251	220
CEA 361690	360	160	90	82	151	90	346	316
CEA 561690*	560	160	90	82	148	90	549	520
CEA 181810	180	180	100	92	171	110	171	140
CEA 281810	280	180	100	92	171	110	271	240
CEA 202311	200	230	110	102	221	160	191	160
CEA 202318	200	230	180	170	222	160	192	160
CEA 332311	330	230	110	102	221	160	321	290
CEA 332318	330	230	180	170	218	160	318	290
CEA 402311	400	230	110	102	219	160	390	360
CEA 602311*	600	230	110	102	218	160	588	560
CEA 403111	400	310	110	101	303	242	394	362

NOTES: ENCLOSURES MARKED * HAVE 6 LID FIXINGS. THE QUANTITY OF INTERNAL FIXING HOLES IS DEPENDENT ON THE SIZE OF THE ENCLOSURE SPECIFIED, PLEASE CONSULT OUR TECHNICAL SALES DEPARTMENT FOR FURTHER DETAILED INFORMATION

PRODUCT DESCRIPTION

Optional extras for CEA enclosures

Mounting Plates

Mounting plates manufactured from 2mm thick steel yellow passivated and suitable for mounting a wide variety of components.

For ordering please add suffix **MP** at the end of the enclosure part number.

Please note:- Mounting plates are only available on sizes CEA 156436 and above.

Hinges

There are two types of hinges available for the CEA range of enclosures, Internal and also External.

The internal hinges comprise a stainless steel joint with an opening angle of about 95 degrees.

For ordering please use part number **INTHI 44201**

The external hinges are manufactured in diecast aluminium complete with stainless steel pins and are supplied with all accessories to maintain the enclosure IP rating

For ordering please use part number **EXTHI 44202**

Please note:- Both types of hinges are only available on sizes CEA 121280 and above.

External Mounting Brackets

External mounting brackets are available in stainless steel to provide a solution for mounting enclosures where the lids need to remain closed after assembly. The kit comprises four feet which can be mounted either horizontally or vertically and are complete with all fixing screws and accessories.

For ordering please use part number **MPL01** for enclosures CEA 128057 to CEA 178057.

MPL02 for enclosures CEA 121280 and above.

Pole Mounting Brackets

Manufactured in diecast aluminium complete with stainless steel pole clamp for use on enclosures size CEA 121280 and above.

For ordering please use part number **EXTPKIT01**

PHONE OUR SALES ORDER LINE 01298 872233

CE-TEK CEA ENCLOSURES

PRODUCT DESCRIPTION

Special Finishes

We are able to provide a wide variety of special finishes however, as a standard option we offer a sea water resistant finish which provides protection against salt water attack and allows the enclosures to have a long lifespan when used in such environments. The Finish is available on all sizes.

For ordering please add suffix **SEO 010** at the end of the enclosure part number.

RFI Shielding

As a standard option we are able to provide the CEA series fully RFI shielded and complete with special gasket to maintain the enclosure IP ratings. Enclosures are available with or without a nickel impregnated internal coating depending on the attenuation level required.

For ordering please use suffix **EMI** at the end of the enclosure part number for RFI gasket only.
For fully coated units with RFI gaskets please use suffix **EMINK**.

High Temperature Use

All CEA enclosures are available fitted with an optional silicon gasket to provide a temperature range of -50 to + 120 degrees C.

For ordering please use suffix **SIL** at the end of the enclosure part number.

Earth Bars and Terminal Mounting Rails

Internal earthing bars and terminal mounting rails are available on CEA sizes CEA 758057 and above.

For ordering please use the following ordering codes.

TS 32 'G' DIN mounting rail suffix **TS32**

TS 35 'Top Hat' DIN mounting rail suffix **TS35**

Earthbars with mounting screws suffix **EBOP 01**

Special Lid Fixings

Special lid fixing screws are available with the following ordering codes.

Security Lid fixings for wire and lead seals suffix **LFLS 001**

Allen head lid fixing screws suffix **ALHD 001**