



characteristics

- Box manufactured from 1.2mm sheet steel.
- lid fixed with captive screws
 - holes for fixing hinges.

paint finish

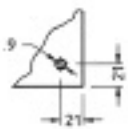
CE-TEK standard epoxy polyester powder coating. Colour: RAL 7032 textured finish.

conformity and approval

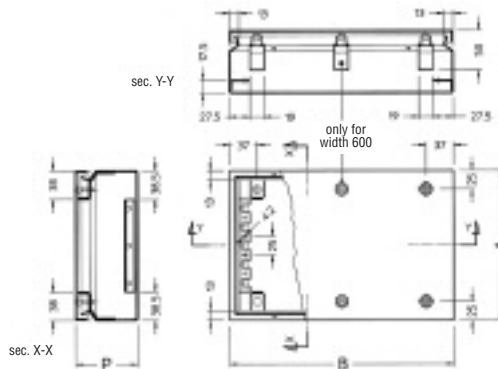


protection degree

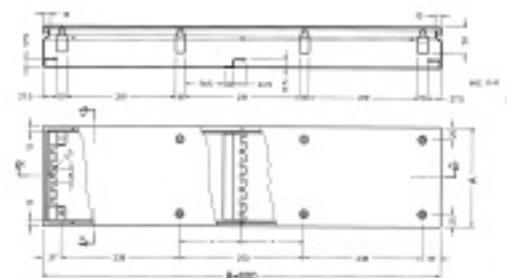
- IP 65 complying with EN50298; EN60529
- type 12, 4, 4X complying with UL508A; UL50
- impact resistance IK10 complying with EN500298; EN50102.



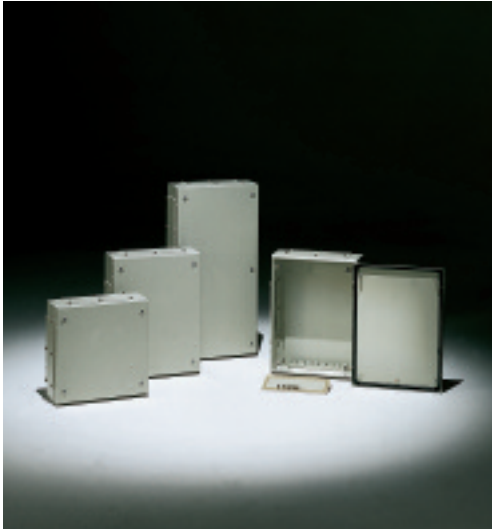
rear fixing holes



code		dimensions			weight
mod.	art.	B	A	P	kg.
CESDV1	108	150	150	80	1.1
	208	200			1.7
	208	300			2.2
	208	400			2.8
	208	500			3.3
	208	600			3.9
CESDV8	208	800	120	5.0	
CESDV1	112	150		1.6	
CESDV2	212	200		2.3	
CESDV3	112	300		2.0	
CESDV3	212	300		2.6	
CESDV3	312	300		3.5	
CESDV4	212	400		200	3.3
CESDV4	312			300	4.3
CESDV4	412			400	5.4
CESDV5	212	500		200	3.8
CESDV5	312			300	5.1
CESDV6	212	600		200	4.5
CESDV6	312			300	5.9
CESDV6	412			400	7.4
CESDV8	212	800		200	5.8
CESDV8	412			400	9.7



To be ordered separately:
 • mounting plate and/or DIN rails.



characteristics

Box manufactured from 1.2mm sheet steel.

- lid fixed with captive screws
- holes for fixing hinges.

paint finish

CE-TEK standard epoxy polyester powder coating.

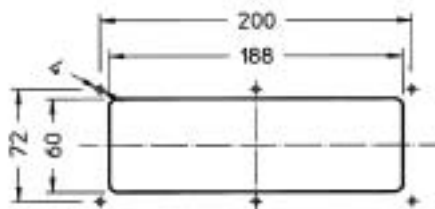
Colour: RAL 7032 textured finish.

conformity and approval



protection degree

- IP 55 complying with EN50298; EN60529
- type 12, 4, 4X complying with UL508A; UL50
- impact resistance IK10 complying with EN500298; EN50102.

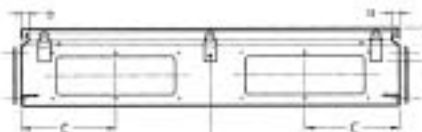


box drilling details

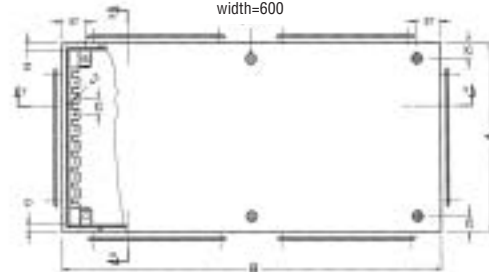
section X - X



section Y - Y



only for width=600



rear fixing holes

code		dimensions				weight kg.	no. of gland plates	no. of gland plates in width	no. of gland plates in height
mod.	art.	B	A	C	P				
CESDF3	212	300	200	-	120	2.7	2	2	-
CESDF3	312		300	-		4.1	4	2	2
CESDF4	212	400	200	-		3.4	2	2	-
CESDF4	312		300	-		4.9	4	2	2
CESDF4	412		400	-		6.0	4	2	2
CESDF5	212	500	200	130		4.4	4	4	-
CESDF5	312		300			6.2	6	4	4
CESDF6	212	600	200	150		5.1	4	4	-
CESDF6	312		300		7.0	6	4	4	2
CESDF6	412		400		8.5	6	4	4	2
CESDF8	212	800	200		6.9	6	6	-	
CESDF8	412		400		11.3	8	6	6	2

To be ordered separately:
• mounting plate and/or DIN rails.



characteristics

Box manufactured from 1.2mm sheet steel.

- hinged lid with locking system, captive screws and plexiglas for viewing.

paint finish

CE-TEK standard epoxy polyester powder coating.

Colour: RAL 7032 textured finish.

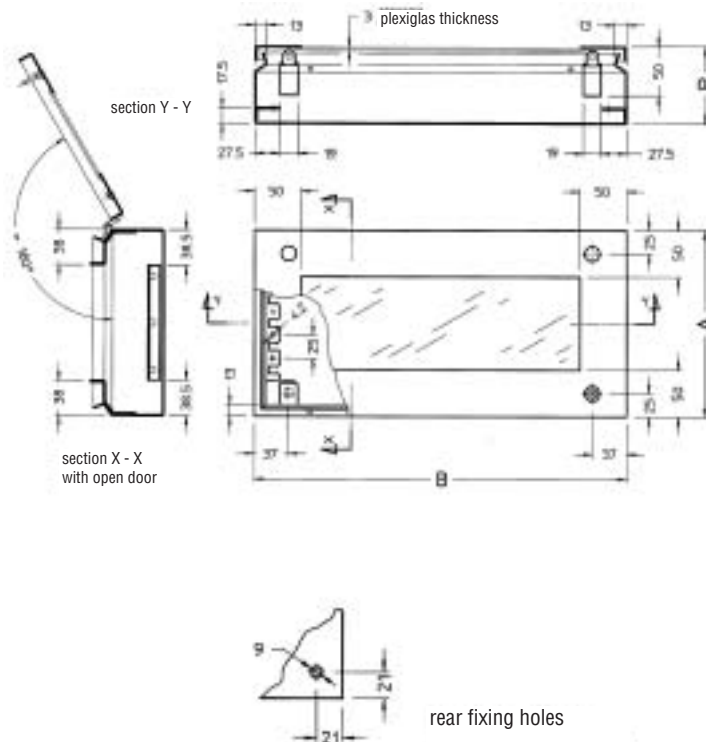
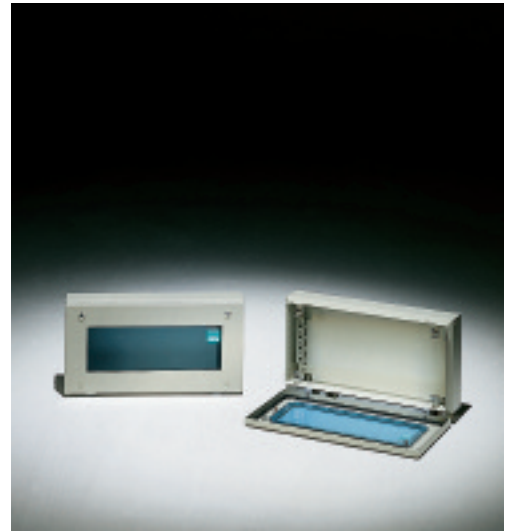
protection degree

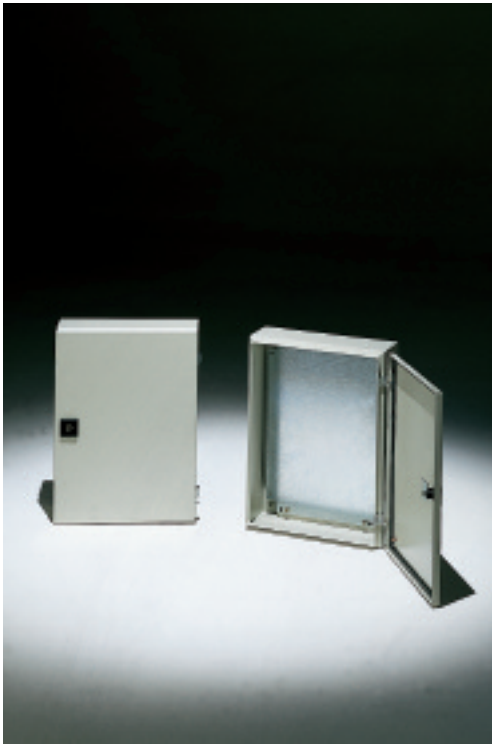
- IP 55.

code		dimensions			weight
mod.	art.	B	A	P	kg.
CESDVX4	212	400	200	120	3.3
CESDVX6	212	600			4.5

To be ordered separately:

- mounting plate and/or DIN rails.





characteristics

Box manufactured from 1.2mm sheet steel.
 Door manufactured from 1.5mm sheet steel.
 • locking system with Ø 3mm double bar key.

paint finish

CE-TEK standard epoxy polyester powder coating.
 Colour: RAL 7032 textured finish.

protection degree

• IP 55.

code		dimensions			weight
mod.	art.	B	A	P	kg.
CESDP2	208	200	200	80	1.8
CESDP2	308		300		2.4
CESDP2	408		400		3
CESDP2	212	200	200	120	2.5
CESDP2	312		300		2.8
CESDP2	412		400		3.5
CESDP2	512		500		4.1
CESDP3	312		300		300
CESDP3	412	400		4.5	

To be ordered separately:

- mounting plate and/or DIN rails.

